



Chaucer Road, Brixton, SE24

3 bedroom house for sale

£870,000

Freehold

Property Details

An exciting opportunity to stamp your own mark on a highly popular road in the heart of Poet's Corner. This three double bedroom Victorian house sits at the end of a terrace, benefitting from plenty of outside space and a south-east facing garden. A large reception room occupies the front of the building, following on is a spacious dining room that opens out onto the garden, a contemporary and spacious kitchen plus a fully equipped bathroom complete with a walk in shower and a bath. Upstairs, three well-proportioned double bedrooms, one of which spans the entire width of the house. There is potential to extend not only into the loft but also from the ground floor into the garden, subject to the necessary permissions. This would increase the value and overall footprint of the house, and allow the new purchaser to create a home entirely built around their own needs and style.

Council tax band E EPC rating E (52)

Features

- Three double bedrooms
- Victorian end-of-terrace
- Over 1100 square feet of internal space
- Large south-facing private garden
- Situated in the heart of Poet's Corner
- Brockwell Park at the end of the road
- Walking distance to Herne Hill and Brixton High Streets
- Freehold
- Chain-free



Chaucer Road, Brixton, SE24



3 Bedroom House

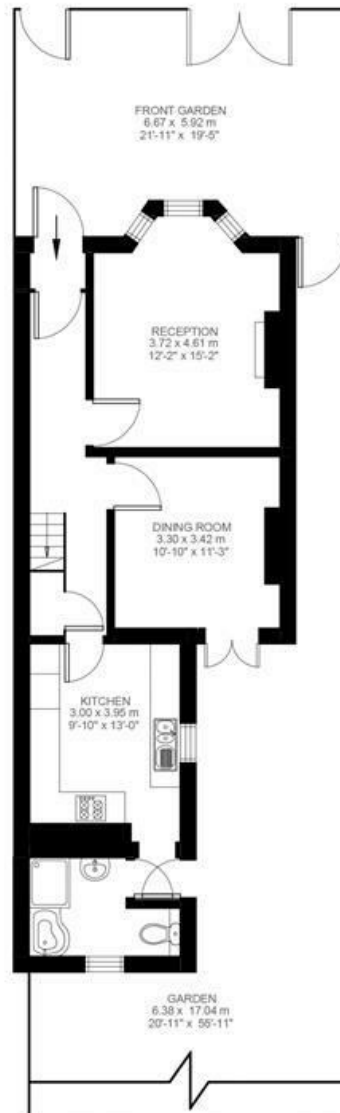
Approx internal area:

1173 sqft 109 sqm

While we do try our very best, floor plans are produced as a guide only and we take no responsibility for the precise accuracy with which any property is represented



First Floor



Ground Floor



Chaucer Road, Brixton, SE24

